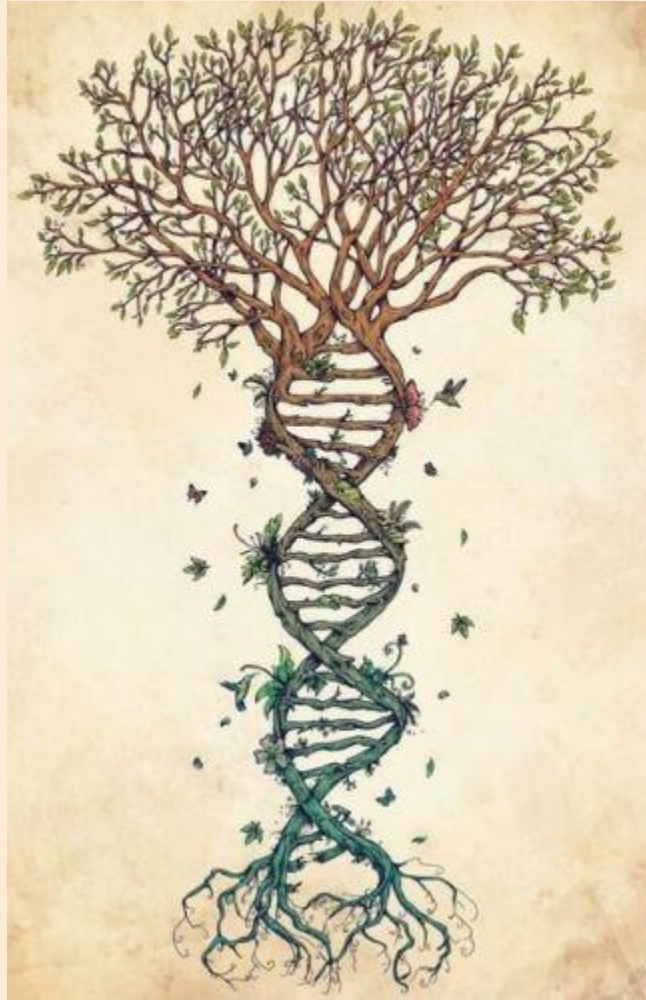




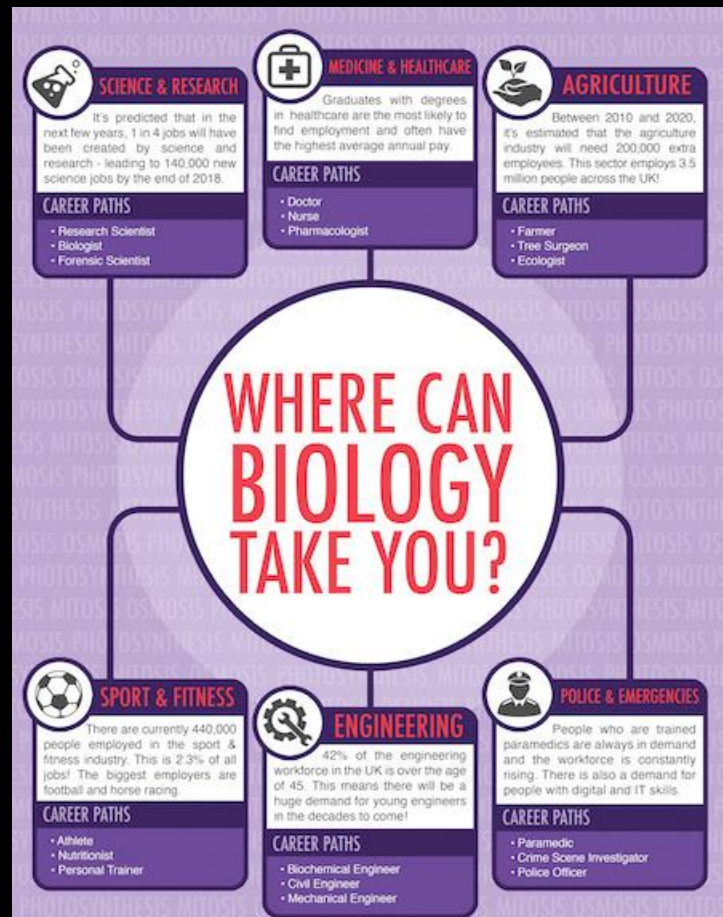
RPS Biology



Post 16 Biology at RPS

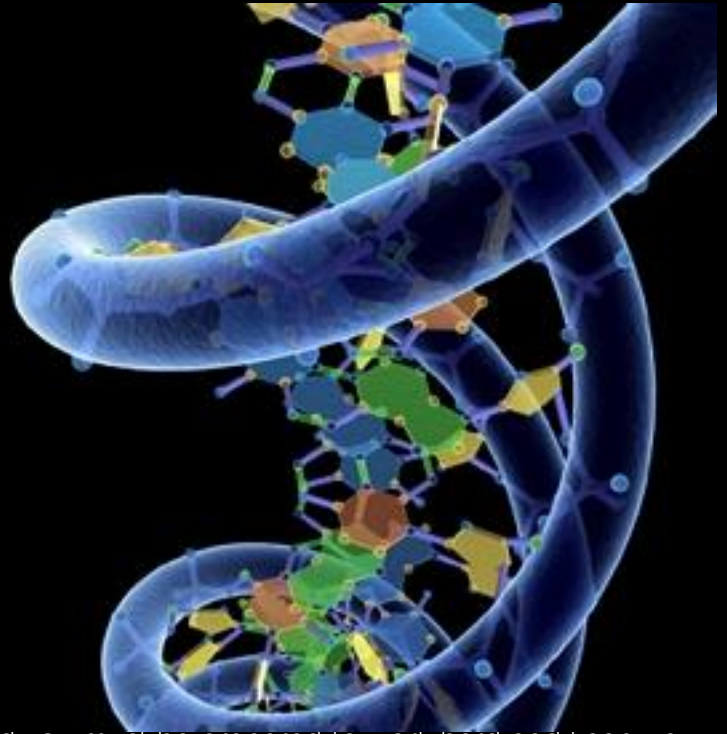
Welcome to Biology

A-LEVEL BIOLOGY IS A BROAD AND FASCINATING SUBJECT, COVERING A RANGE OF TOPICS FROM THE BIOCHEMISTRY OF LIFE UP TO HOW ORGANISM INTERACT IN THEIR HABITAT AND HOW THEY CAN BE CONSERVED.



Contents

1. Welcome – page 3
2. Course structure – page 4
3. Biology Roadmap – page 5



Welcome

Choosing A-Level Biology is a fantastic decision, allowing you to explore the world in which we live. It is a challenging A-Level and you must be prepared to work hard and keep up with your wider reading throughout the two years.

At RPS we firmly believe that you should feel fully prepared and supported, and as such we have a clear and organised structure to support our A-Level students. We have full reading lists structuring how each of the 8 Topics on Edexcel Specification are delivered, alongside resources and Powerpoints on the VLE, allowing students to read ahead and be fully resourced and prepared before lessons. This coupled with a department boasting a host of experienced staff, you will have every opportunity to succeed.

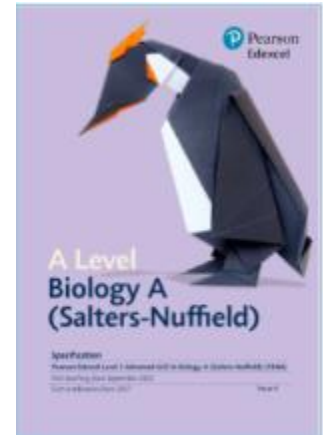
Mr Connor

Head of Biology

COURSE STRUCTURE

WE FOLLOW THE EDEXCEL BIOLOGY A (SALTERS-NUFFIELD) SPECIFICATION. THE COURSE IS CONTEXT LED, WITH EACH OF THE 8 TOPICS FOCUSING ON A BIOLOGICAL SCENARIO AND THEN LINKING TO THE UNDERPINNING CONCEPTS AND THEORY. THERE ARE 18 CORE PRACTICALS THAT ARE COMPLETED THROUGHOUT THE 2 YEARS.

- TOPIC 1: LIFESTYLE, HEALTH AND RISK
- TOPIC 2: GENES AND HEALTH
- TOPIC 3: VOICE OF THE GENOME
- TOPIC 4: BIODIVERSITY AND NATURAL RESOURCES
- TOPIC 5: ON THE WILD SIDE
- TOPIC 6: IMMUNITY, INFECTION AND FORENSICS.
- TOPIC 7: RUN FOR YOUR LIFE
- TOPIC 8: GREY MATTE



Assessment:

The A-Level is assessed by 3 examinations at the end of Year 13. There is no coursework or practical assessment.

Paper 1: The Natural Environment and Species Survival (100 marks – 2 hours)

Paper 2: Energy, Exercise and Co-ordination (100 marks – 2 hours)

Paper 3: General and Practical Applications in Biology (100 marks – 2 hours)



**Edexcel
course
overview**



RPS Biology



Possible careers

*Research scientist Biologist Doctor Nurse Forensic scientist Ecologist
Farmer Athlete Nutritionist Sports scientist Personal trainer
Biochemical engineer Civil Engineer Paramedic CSI Police officer
and many more!!*

Higher education— Degree courses at universities.

Other post 18 options —Sponsored degrees, further education college courses?

Work - You might want to try and find a Traineeship, apprenticeship (such as an Intermediate Apprenticeship), a job with training or a part-time job.



TOPIC 8: GREY MATTER.

TOPIC 7: RUN FOR YOUR LIFE

TOPIC 5: ON THE WILD SIDE

TOPIC 4: BIODIVERSITY AND NATURAL RESOURCES

YEAR **13**



TOPIC 6: IMMUNITY, INFECTION AND FORENSICS.

TOPIC 3: VOICE OF THE GENOME

TOPIC 2: GENES AND HEALTH

YEAR **12**



TOPIC 1: LIFESTYLE, HEALTH AND RISK

