



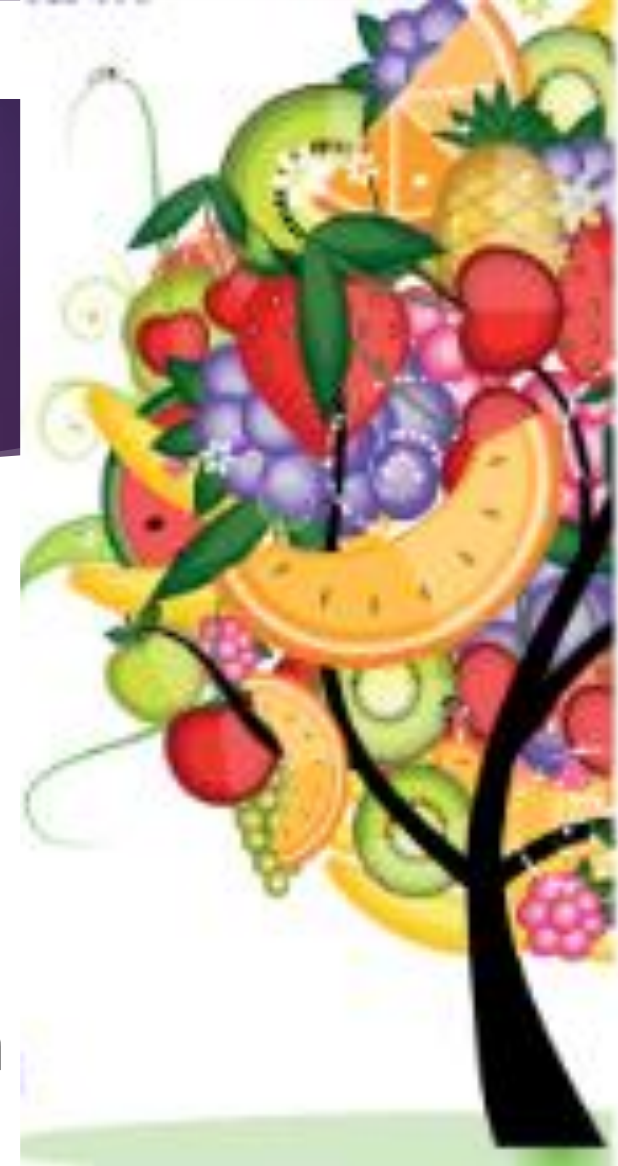
Health and Social Care

LEVEL 3 BTEC VOCATIONAL QUALIFICATION

Welcome



1. What you can expect from the course
2. How it will be assessed
3. What you can do with this qualification
4. What we expect from you



BTEC L3 qualification in Health and Social Care: Extended Certificate



- 2 year course
- Study the health care, social care sectors.
- Apply and develop the knowledge and skills related to the sectors in class and on work placements.
- Successful completion of the course will result in achieving points equivalent to one A Level.



Unit delivery



- ▶ Build on Level 2 course but not a requirement
- ▶ Five lessons a week in year 12 and four lessons a week in year 13
- ▶ Work experience opportunities to learn specific roles and responsibilities and demonstrate care values and skills
- ▶ Visits to health care settings and visits from Health and Social Care professionals

Combination of assessment styles to suit a range of skills

- ▶ **Learners have the opportunity to demonstrate their knowledge, skills and understanding in a range of work-related contexts**
 - ▶ **Internal assignments:** Work-related assignments set and marked by the centre.
 - ▶ **External Tasks:** Practical, work-related tasks, set and marked by Pearson.
 - ▶ **Written exams:** Written answers to practical questions set and marked by Pearson.
 - ▶ **Synoptic units:** Students can demonstrate that they can apply skills, knowledge and techniques learned across the qualification.

Breadth and progression

This qualification has a core of underpinning knowledge, skills and understanding, and a range of options to reflect the breadth of pathways within a sector.

This gives learners the opportunity to:

- gain a broad understanding and knowledge of a vocational sector
- investigate areas of specific interest
- develop essential skills and attributes prized by employers, further education colleges and higher education institutions.

This suite of qualifications provides opportunities for learners to progress to either academic or more specialised vocational pathways.



Aims and expectations

- ▶ Your new BTEC Nationals offer learners modern, work-related qualifications which open the door to higher education and a career because they:
 - ✓ are each designed with a clear purpose to support defined progression routes into higher education or employment
 - ✓ build high-level skills such as teamwork, creative thinking and presentation skills.
 - ✓ develop independent research and study skills essential for success at university.

Assessment Extended Certificate



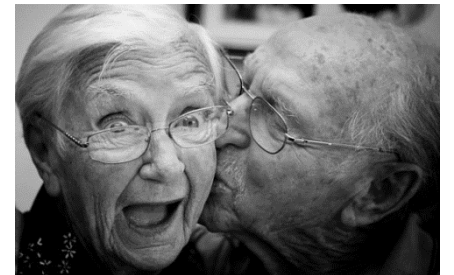
Unit	Assessment method	GLH	% of final grade
1. Human Lifespan Development	Externally assessed	90	12.5
2. Working in health & social care	Externally assessed	120	16
5. Meeting Individual Care and Support Needs	Internally assessed	90	12.5
14. Physiological Disorders and their Care	Internally assessed	60	8

Unit 1



Human Lifespan Development

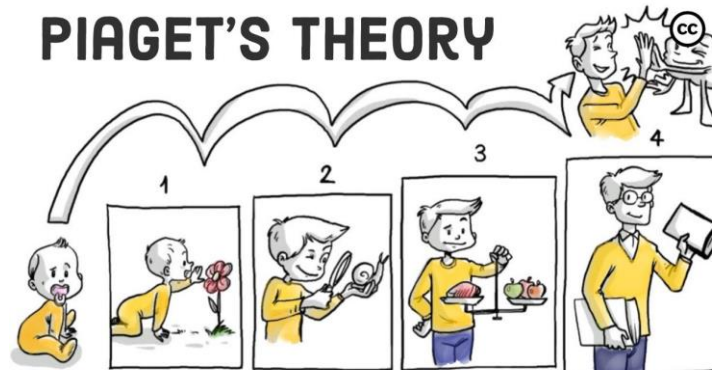
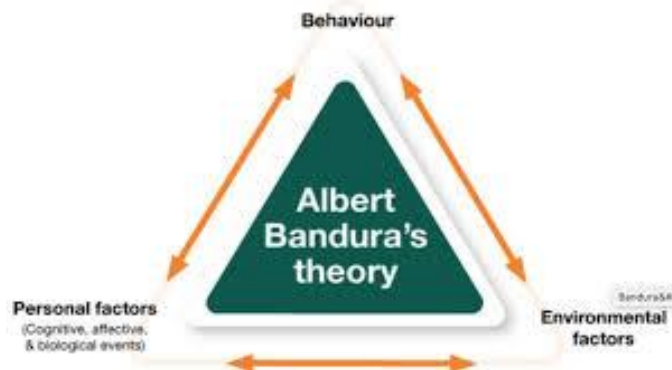
- ▶ Unit type: mandatory
- ▶ Guided learning hours: 90
- ▶ Assessment type: External exam normally taken in January
- ▶ You will learn the essential skills needed to support development of people with a wide range of needs, from babies and toddlers to adults and the elderly.



Assessment Outcomes: What will I learn?



- Demonstrate knowledge physical intellectual emotional and social development through all life stages.
- Demonstrate understanding of how development is affected by a variety of life events from abuse, divorce, death to addiction and genetic diseases.
- Analyse and evaluate information related to human development theories/models and factors such as Bandura, Piaget and Gesell



Unit 2



Working in health & social care

- ▶ Unit type: mandatory
- ▶ Guided learning hours: 120
- ▶ Assessment type: External
- ▶ You will explore what it is like to work in the health and social care sector, including the roles and responsibilities of workers and organisations.



Assessment outcomes: What will I learn?



- Demonstrate knowledge regarding the roles and responsibilities of the sector and how they are monitored and regulated
- Make connections, analyse and evaluate different case studies to demonstrate understanding of how professionals and multidisciplinary teams meet service user needs
- Understand the roles of organisations in the health and social care sector



The Multidisciplinary Team



Unit 5



Meeting Individual Care and Support Needs

- ▶ Unit type: mandatory
- ▶ Guided learning hours: 90
- ▶ Assessment type: internal
- ▶ Learners focus on the principles and practicalities that underpin meeting individuals' care and support needs, which are the foundation of all the care disciplines.



Assessment Outcomes: What will I learn?



- Examine principles, values and skills which underpin meeting the care and support needs of individuals
- Examine the ethical issues involved when providing care and support to meet individual needs
- Investigate the principles behind enabling individuals with care and support needs to overcome challenges
- Investigate the roles of professionals and how they work together to provide the care and support necessary to meet individual needs.



Unit 14



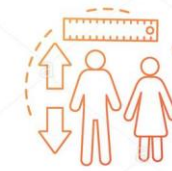
Physiological Disorders and their Care

- ▶ Unit type: Optional Unit
- ▶ Guided learning hours: 90
- ▶ Assessment type: internal
- ▶ Learners explore types of physiological disorders, the procedures for diagnosis, and the development of a treatment plan and provision of support for service users.

HEALTH MEASUREMENT



Body weight



Body height



Body temperature



Blood pressure



Blood sugar test



Heart rate monitoring



Body shape measurements

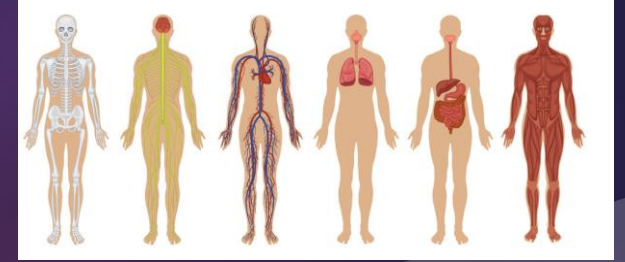


Body fat percentage



Cholesterol test

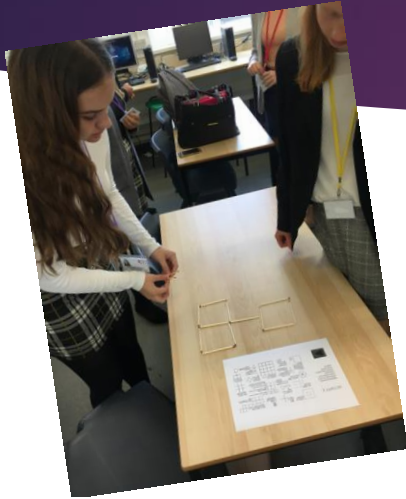
Assessment Outcomes: What will I learn?



- Investigate the causes and effects of a range of physiological disorders
- Examine the medical investigation and diagnosis of physiological disorders
- Examine treatment and support for service users with physiological disorders
- Using real life case studies, develop a treatment plan for service users with physiological disorders to meet their needs.



Meet the Students



Want to be a.....

Radiographer

Nutritional Therapist

Midwife

Nursery Nurse

Psychologist

Paramedic Teacher

Physiotherapist

The rise in applications for courses based in health and social care, up 56% on last year

What do the students say about the course

- ▶ It's interesting and leads directly into my career choice of occupational therapy.
- ▶ *I love learning about the effects of alcohol, drugs, addictions*
- ▶ *I don't like having to recall facts about psychological theories, it's interesting but complex.*
- ▶ I have enjoyed learning about genetic diseases
- ▶ It's given me an understanding of the different needs of the patients that I treat and understand their background affects their care needs.
- ▶ Its opened my eyes a lot more to all aspects of health and social care.
- ▶ I like the fact the course is made up of modules and units that I can re take and I can see my progress clearly over time rather than one exam at the end.

Progression opportunities

College and Further Education

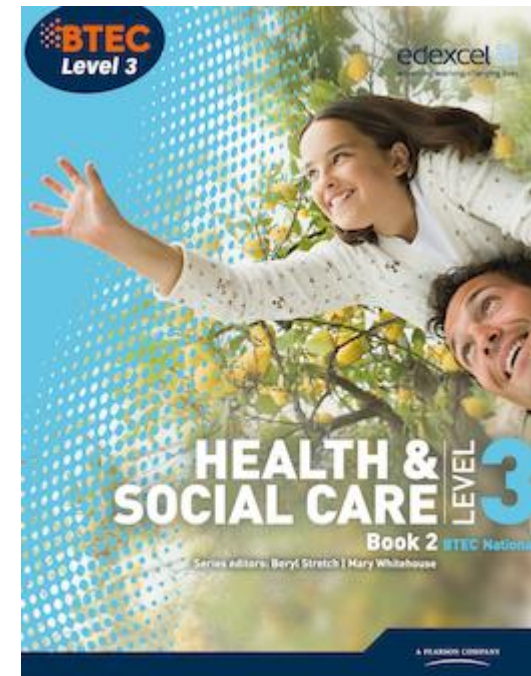


- The Edexcel BTEC Level 3 provides a good foundation for learners for progression onto further education.
- Achievement at Level 3 provides a suitable foundation for further study within the sector, supporting moving on to other vocational qualifications at Level 3, but also progressions to Level 4 and 5

Apprenticeships university Employment

http://www.nurseryjobs.co.uk/childcare_qualifications_uk.php

<http://www.careerpilot.org.uk/jobs/health-and-social-care/jobs>



Stakeholder support

- ▶ The Edexcel BTEC Level 3 diploma or extended certificate in Health and Social Care reflects the needs of employers, further and higher education representatives and professional organisations.
- ▶ Key stakeholders were consulted during the development of this qualification.
- ▶ Letters of authentication.



https://qualifications.pearson.com/en/qualifications/btec-nationals/health-and-social-care-2016/coursematerials.html?utm_source=btecguideshs&utm_medium=Print&utm_campaign=VOC_GEN_01JAN2016_nationals16_Q#filterQuery=category:Pearson-UK:Category%2FStakeholder-recog

What you can do with this qualification?

- ▶ Please use these links below to give you more information about career options with HSC qualifications
- ▶ <https://successatschool.org/advisedetails/941/what-jobs-can-you-get-with-health-and-social-care>
- ▶ <https://www.cache.org.uk/news-media/career-progression-options-in-health-and-social-care>

What we expect from you

WORK
HARD
DREAM
BIG.



- ▶ Hard work
- ▶ Dedication
- ▶ Meeting Deadlines
- ▶ Commitment to engage in work experience in the health and social care sector
- ▶ Contribution to class discussions
- ▶ Mutual respect
- ▶ The confidence to work with all ranges of ages, personalities and abilities.
- ▶ Treat adults and children with dignity and respect

Dedication
Responsibility
Education
Attitude
Motivation

Any Questions

- ▶ Contact; Mrs Glennie Head of Health and Social Care
- ▶ e.glennie@roundwoodparkschool.co.uk
- ▶ Mrs Turberville
- ▶ Mrs Halliday
- ▶ Mr Binks
- ▶ Any student currently studying the course



BTEC Summary

Human Lifespan Development



Learn the Skills needed for working in HSC sector and beyond
Learn about Human Health, Psychology and Social needs
Informal and informal provision of care
Two exam sat in Year 12
Two written assignments completed in Year 13

Commitment to Quality of Care



Compassion



Everyone Counts



Improving Lives



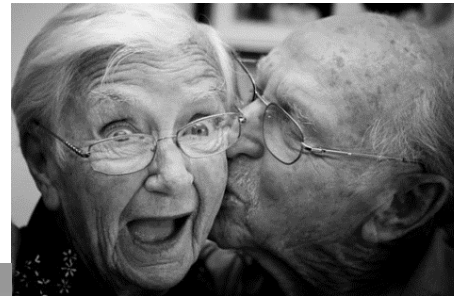
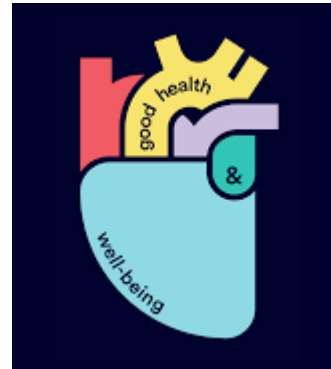
Respect and Dignity



Working Together for Patients



Health and Wellbeing Health Needs



Health and Social Care Services and Values

