

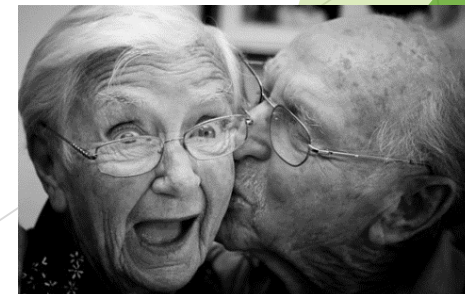


BTEC Tech Award in Health and Social Care

What will I learn?

Component 1: Human Lifespan Development

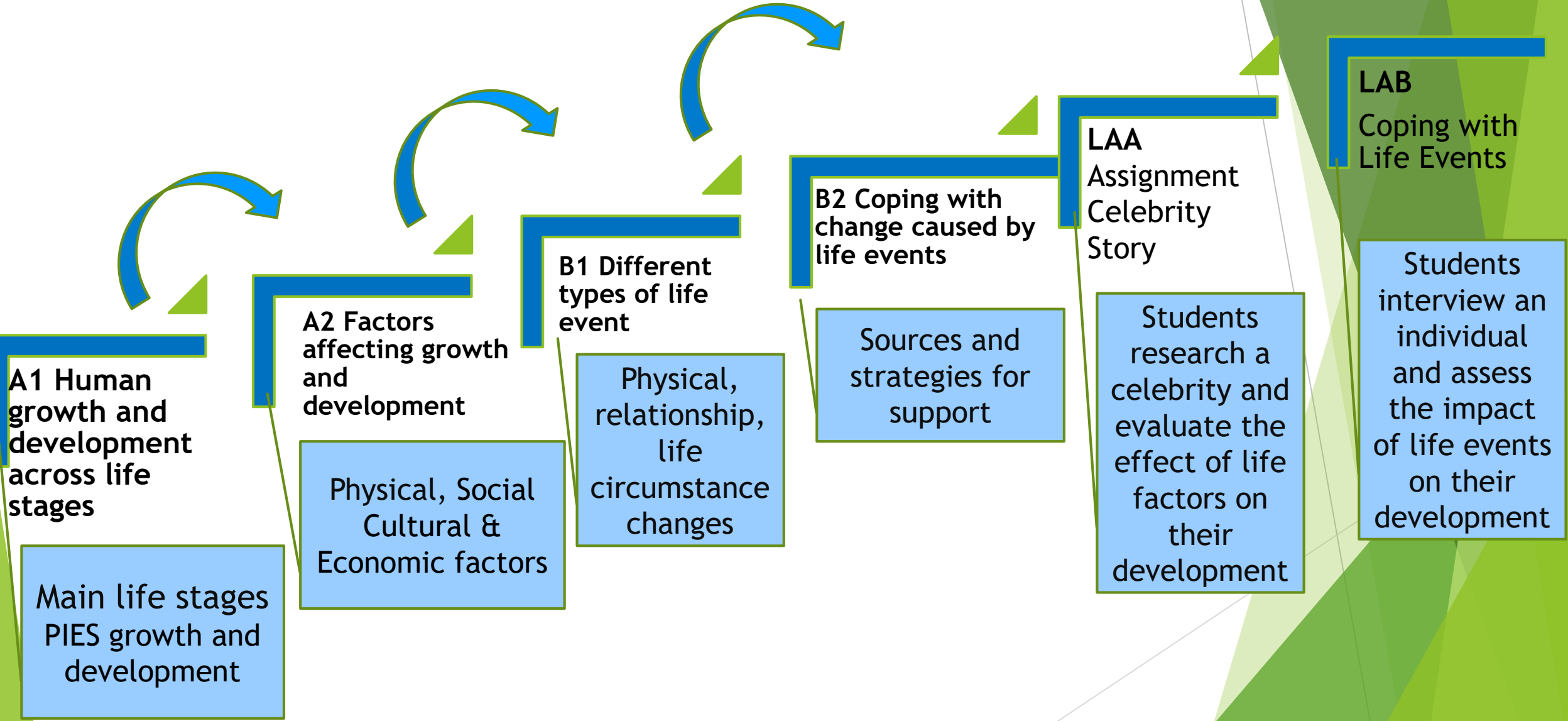
- ▶ Levels: 1/2
- ▶ Assessment type: Internal
- ▶ Guided learning hours: 36
- ▶ Learners will learn all about development through different life stages and investigate how, in real situations, human development is affected by different factors and that people deal differently with life events.



Assessment

A written assignment studying a known individual discussing their growth and development across life stages and the factors that affect it. This will also include an interview of an individual to investigate how individuals deal with life events.

Component 1: Human Lifespan Development



What will I learn?

Component 2: Health and Social Care Services and Values

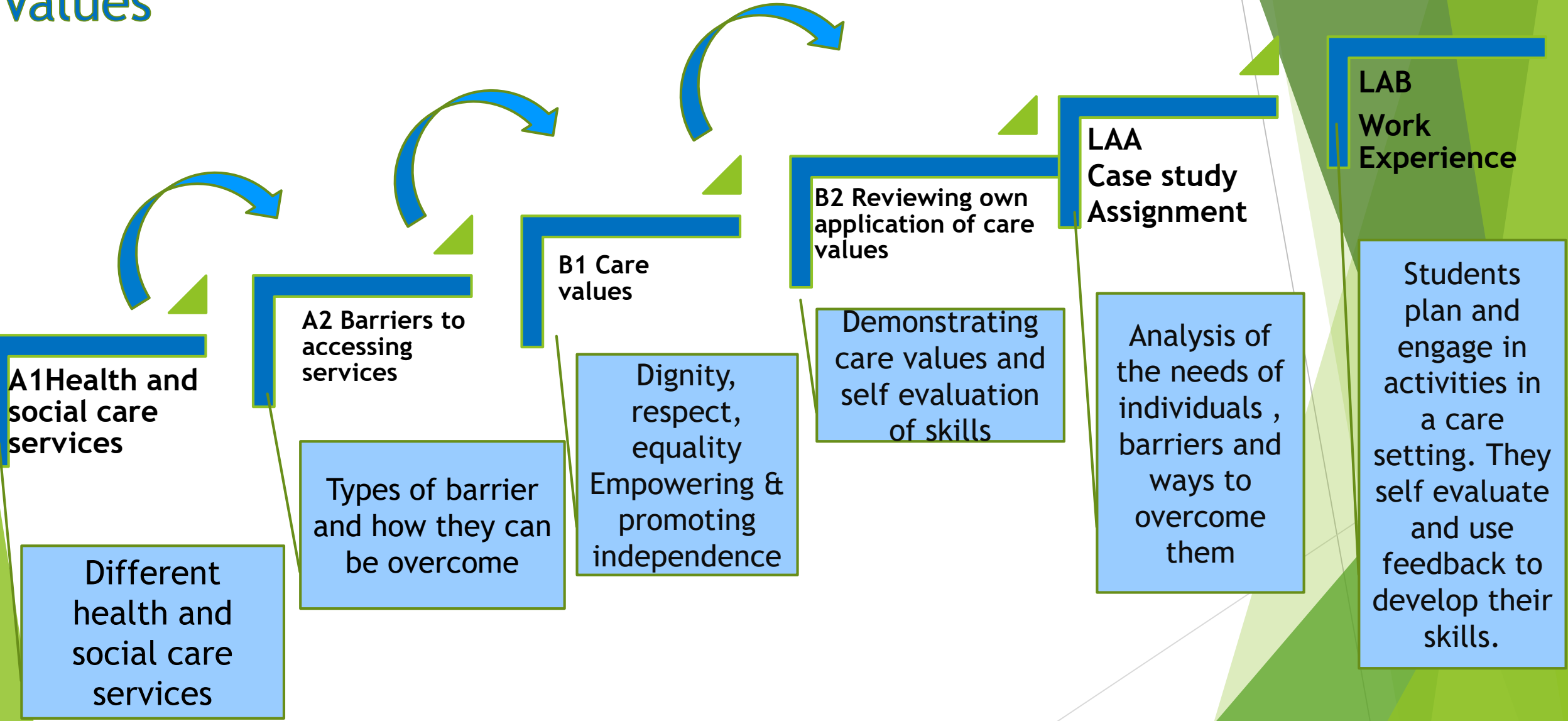
- ▶ Levels: 1/2
- ▶ Assessment type: Internal
- ▶ Guided learning hours: 36
- ▶ Learners study and explore practically, health and social care services and how they meet the needs of real service users. They also develop skills in applying care values.



Assessment

Based on case studies, produce a written assignment showing an understanding of the care value base, the different types of health and social care services and barriers to accessing them. This will also include opportunities to demonstrate care values and review own practice by running activities attending work experience.

Component 2: Health and Social Care Services and Values



What will I learn?

Component 3: Health and Wellbeing

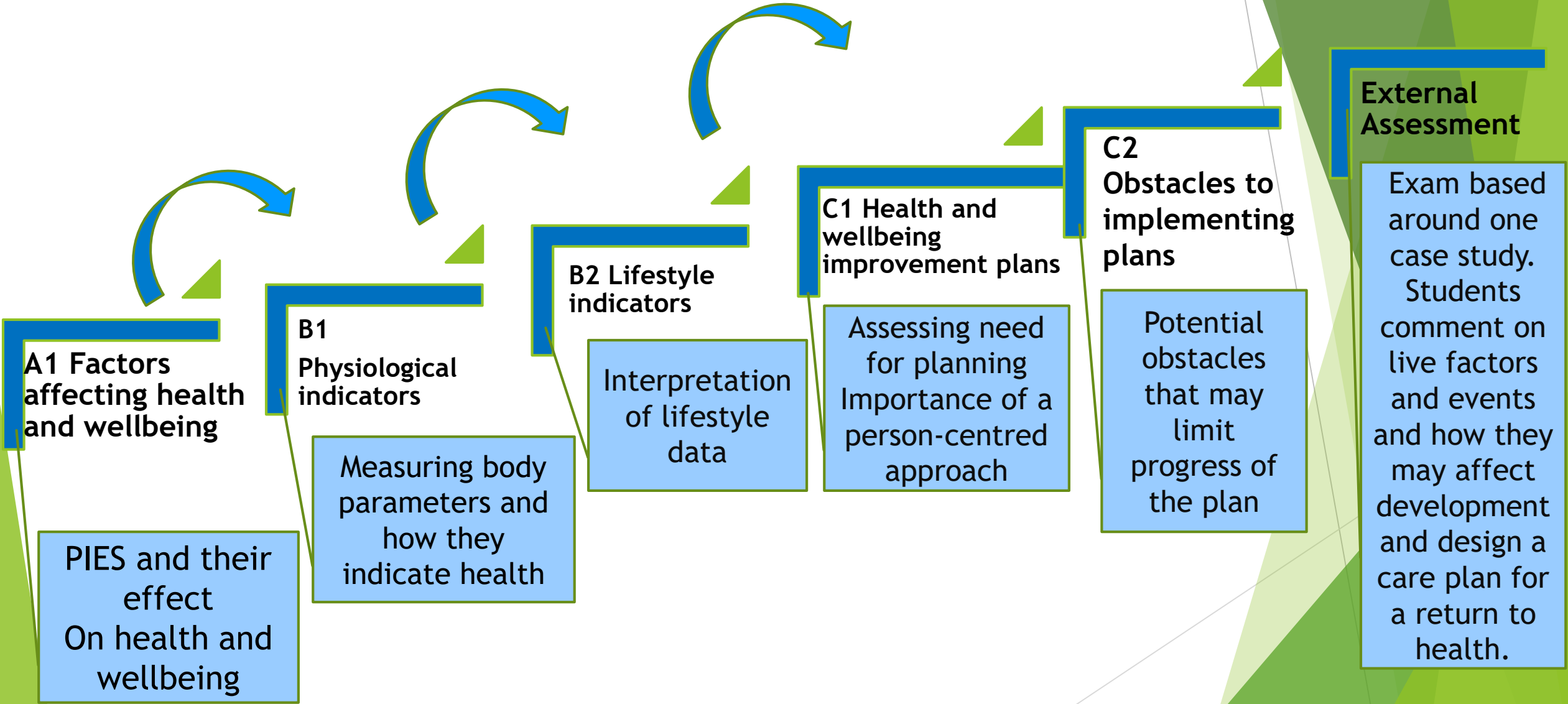
- ▶ Levels: 1/2
- ▶ Assessment type: External
- ▶ Guided learning hours: 48
- ▶ Learners will study the factors that affect health and wellbeing, learning about physiological and lifestyle indicators, and how to design a health and wellbeing improvement plan.

Assessment

A exam where students read a range of case studies and answers questions based on their knowledge from all three unit.



Component 3: Health and Wellbeing



Summary of Assessment

Edexcel BTEC Level 1/Level 2 First Award in Health and Social Care

<u>Component</u>	<u>Assessment method</u>	<u>GLH</u>
1 Human Lifespan Development	Internal Written assignment	36
2 Health and Social Care Services and Values	Internal Written assignment	36
3 Health and wellbeing	External (Synoptic Exam)	48

Pass

Merit

Distinction

Attainment

Per Component...

Calculation of qualification grade Award	Internal Assignment	External Exam
Level 1 (Merit)	15	
Level 2 Pass	22	30-35
Level 2 Merit	29	36-41
Level 2 Distinction	36	42-48

Overall Grade	Total Points Threshold and Grade
Level 1 Pass	30
Level 1 Merit	43
Level 1 Distinction	56
Level 2 Pass	69
Level 2 Merit	82
Level 2 Distinction	95
Level 2 Distinction*	108

Pass

Merit

Distinction