

Key Stage 4 Options

GCSE Music



Why choose music?

Exciting and
varied

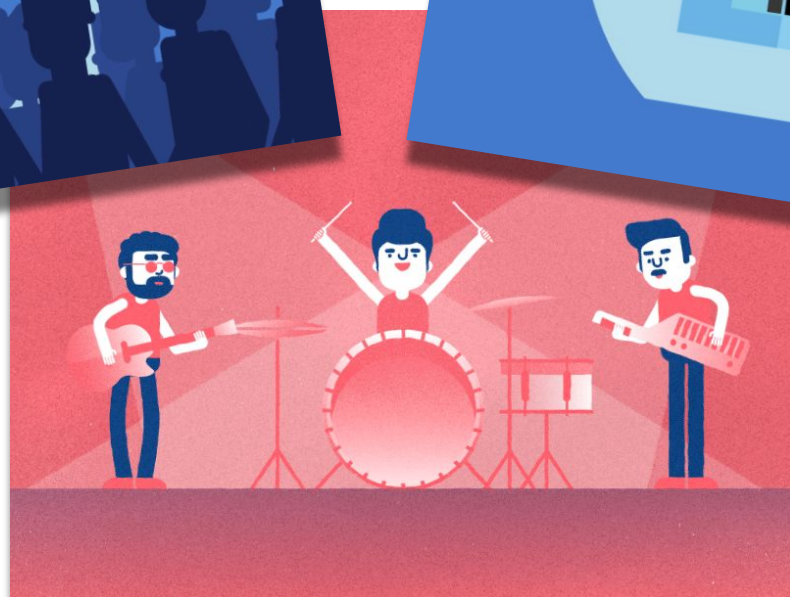
Arrange
music

perform
with others

Compose



Why choose music?



Why choose music?

Exciting and
varied

Arrange
music

One exam

perform
with others

Performing
(coursework)

Composing
(coursework)

Compose

LOVE
MUSIC

Course Overview

Composition 30%

Free composition (15%)

Composition to a set brief (15%)

Your compositions for both components need to be a **minimum of three minutes** long

Your performances for both components need to be a **minimum of four minutes** with at least **one minute** as part of an ensemble

Performance 30%

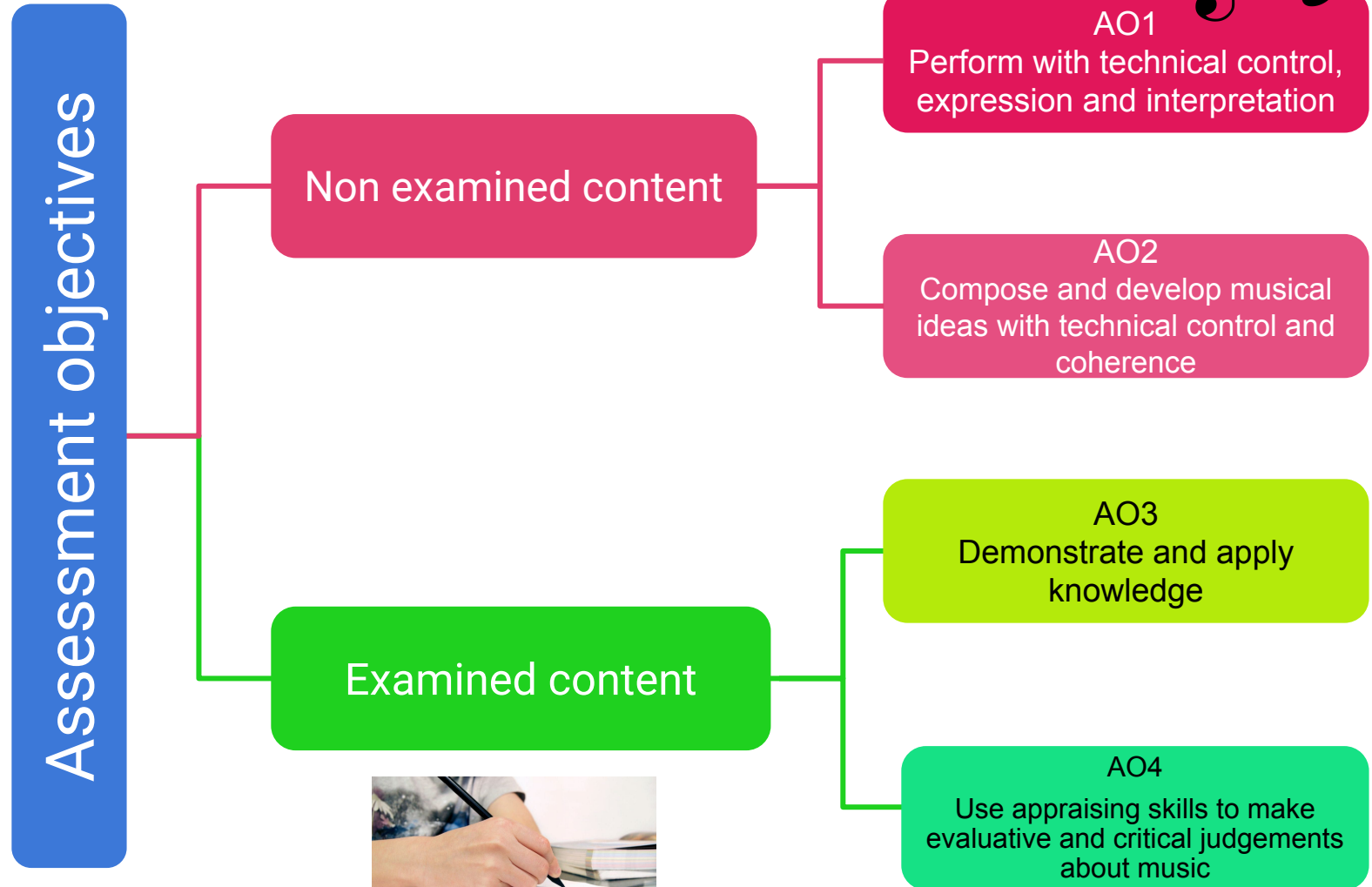
Solo performance (15%)

Ensemble performance (15%)

Component 3: Listening and Appraising

Written exam 1hr 30 mins (40%)

Assessment



Listening and Appraising- Areas of Study



What do our students say about GCSE

"I like music as you can learn new instruments and different styles"

"Challenging AND fun."

"If you like music, you will find the lessons fun as you get to work in groups as well as working as an individual."

"There is so much variety in the lessons"

"YOU GET TO UNDERSTAND MUSIC ON A DEEPER LEVEL AND APPRECIATE IT EVEN MORE."

"It's not like others subjects, it's something different and fun on the timetable. Highlight of my week!"

Frequently asked questions

What are the requirements in order to do the course?

Do I have to be able to play more than one instrument?

What standard do I need to be on my instrument?

Do I need to be able to read music?

Music

For more information please speak to your Year 9 teacher or contact Mrs Gray a.gray@roundwoodpark.co.uk or Miss Dale a.dale@roundwoodpark.co.uk

