



## At Roundwood Park Sixth Form...

...our aim is to prepare each one of you for life beyond school. A Levels and Level 3 BTECs offer very different challenges to those of GCSEs. Success at this educational stage is all about building **Independence**.

Subject staff will expect you to work independently outside lesson times, completing a minimum of 5 hours of independent study per subject. **Self Control, Determination** and **Organisation** will be the key to developing systems of independent learning, ensuring that you flourish and achieve excellent outcomes - whether that's a platform for Post-18 study, an apprenticeship or employment.

Teachers will encourage you to read around the subject content, as well as focusing on the specifics of each course and exam practice. Our KS5 teachers are fully committed and passionate about their subjects - and they want you to be too.

**This Toolkit is designed to provide you with links to supporting documents and activities to use during your study periods, enabling you to foster independence as you transition into adulthood.**

## Read Me!

Click here!

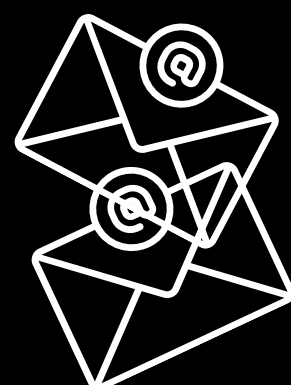


We need you to read your **Sixth Form Handbook** alongside this Toolkit.

You'll find all of our expectations in there - for example, it's your responsibility to inform us of absences, timetabled home study and volunteering commitments. As a role model, we expect you to keep up-to-date and informed; adhering to the code of conduct and abiding by our structure of privileges.

## Keeping in Touch

The Sixth Form team will communicate a vast array of opportunities including information on work experience, leadership and enrichment by email. It is your responsibility to check emails regularly (every morning and afternoon). Establishing good habits from the beginning will ensure you hear news first and fast!



# Tools for your study periods....



Click here!



Every sixth form student can log into the VESPA Portal. Identifying your barriers to learning using this platform can help you to work on your VISION, EFFORT, SYSTEMS, PRACTICE and ATTITUDE.

## Independent Learning Guide

Use the Independent Learning Guide to discover techniques and strategies for developing personal understanding of content with depth and longevity.

[CLICK HERE](#)

## Independent Learning Licence



Owning an RPS Sixth Form Independent Learning Licence is earned through evidenced practice of study techniques signed off by your teachers.

[CLICK HERE](#)

## ASPIRE

The Roundwood Park Learning Habits of ASPIRE remind us how we can maximise classroom learning and independent study time. Establishing good habits early will pay dividends throughout your working and academic life.

The Roundwood Park Leaver is:



## LEARNING HABITS

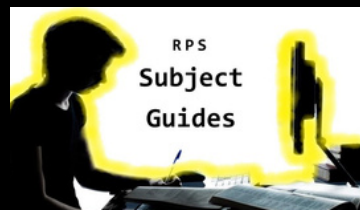
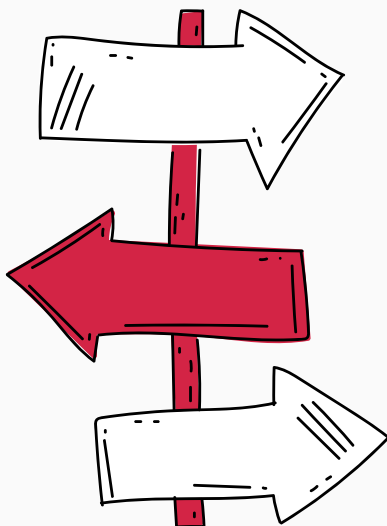
Click here!



## SUPER CURRICULUM

Whilst the Independent Learning Licence ensures you establish personal strategies and techniques for learning independently, the Super Curriculum, and completion of the scholars programme, rewards you for stretching yourselves.

[FIND OUT MORE HERE](#)



Without evidence of WIDER READING, your applications will be limited. Our Library Subject Guides are superb sources of information & stimulation. Spend study time reading through their material.

[VISIT RPS SUBJECT GUIDES](#)



# Tools for your Post-18 applications...



## C.V. & Personal Statements

You will be asked to write about yourself and your subject interests when applying to university or employment. Ensuring you have plenty to say is vital.

[HELP & ADVICE](#)

## UCAS

Applying for undergraduate or further education can be daunting. Getting prepared early, using study periods to research courses and universities is key. Use the timeline to help you.

[VISIT UCAS](#)

## TARGET SETTING

Set yourself targets to ensure you are making progress. Take time to reflect on your learning, your personal educational journey. Take control and responsibility for the direction it takes.

[SET YOUR TARGETS HERE](#)



## Apprenticeships

Staying aware of new apprenticeship advertisements is time-consuming. Use your study periods to regularly visit the apprenticeship website or unifrog for the latest lists.

[APPRENTICESHIP WEBSITE](#)

## unifrog

Using your Unifrog account to record your competencies and achievements will make light work of university and apprenticeship applications. Use your study periods to record these...

[VISIT UNIFROG](#)



Make use of our RPS Careers Service - Mrs Hilliard is our Careers Subject Leader, supported by Mrs Patel and Mr Cousins our external Careers Advisor.

Get in touch! [careers@roundwoodpark.co.uk](mailto:careers@roundwoodpark.co.uk)

## COMPETITIVE UNIVERSITY PROGRAMME

Students considering competitive courses should connect to the Competitive University Programme - Google Classroom code: **qbbpjhh**  
Information will be shared specific to Oxbridge, Medicine, Dentistry and Veterinary Medicine.  
As well as seminar presentations and guidance on summer schools and taster courses.

# RPS - A place to flourish...

Top 12 Competitive  
Universities



# Beyond the Classroom...



## The RPS Sixth Form is not simply about academic opportunities

You play a unique and valuable role in contributing to the wider life of the school; you are our **role models**. Becoming involved in extra curricular, leadership and volunteering outside the classroom strengthens your applications Post-18, and develops you into confident Roundwood Park Leavers.



### STUDENT LEADERSHIP GOVERNMENT (SLG)

The Student Leadership Government (SLG) is democratically elected each year to take on leadership roles within our school. There are approximately 40 positions of responsibility; each with a different purpose for driving school improvements and engagement in extra-curricular, community and charity work both in and out of school.

### Academic Tutoring, Mentoring, Sports Leadership and Employment

In addition to the Student Leadership Government, many Year 12 students become academic tutors, teaching GCSE students in their lunchtimes or after school. Others prefer pastoral responsibilities, like mentoring Year 7s or taking on paid employment in our Canteen or Sports Hall.

### SIXTH FORM & THE COMMUNITY

The RPS community is inspired and maintained by hundreds of volunteering opportunities where our Sixth Form students build resilience, kindness and empathy for others. Every Year 12 student will complete a minimum of 15 hours of volunteering in our immediate or wider Roundwood Community.

Launching after half term!

