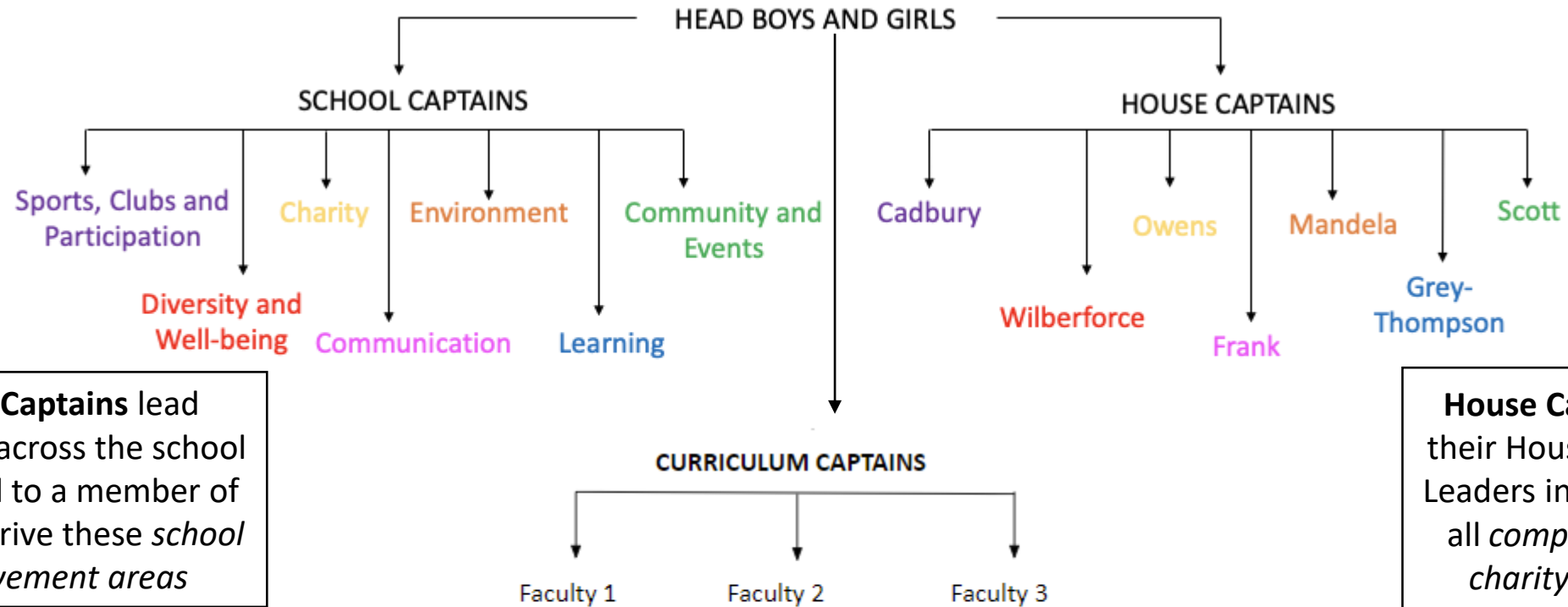


# The Student Leadership Government (SLG) Structure



**School Captains** lead initiatives across the school and linked to a member of SLT, help drive these *school improvement areas*

**House Captains** lead their House and House Leaders in Years 7-11 in all *competitions* and *charity* initiatives

**Curriculum Captains** run faculty weeks, engaging all years in activities and clubs throughout a week. They liaise with Heads of Faculty to promote involvement

