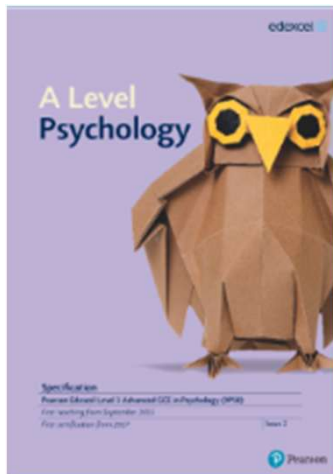


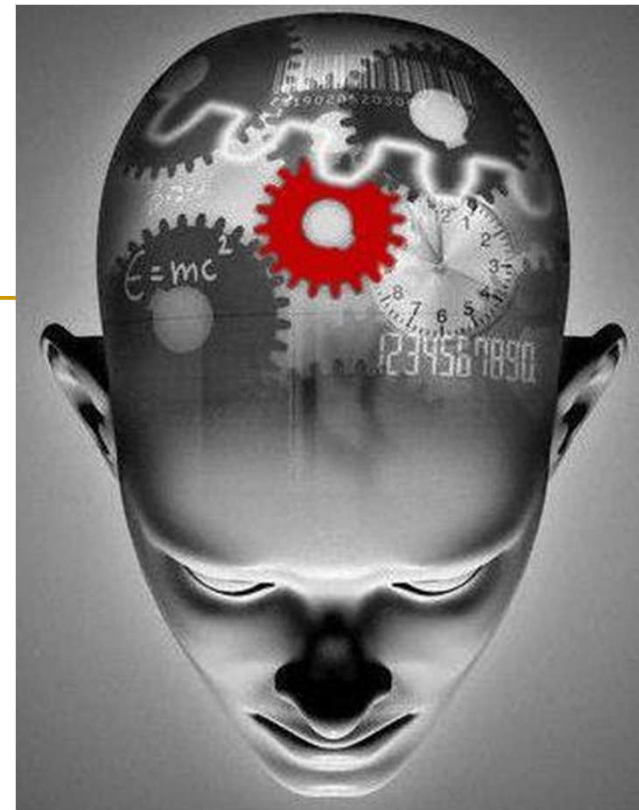


# A Level Psychology Edexcel



Mrs Gilpin  
Head of Psychology

Mrs Dyer and Mrs Sykes  
Psychology Teacher



# Definition:



- Psychology is the study of :
  - Mind
  - Behaviour

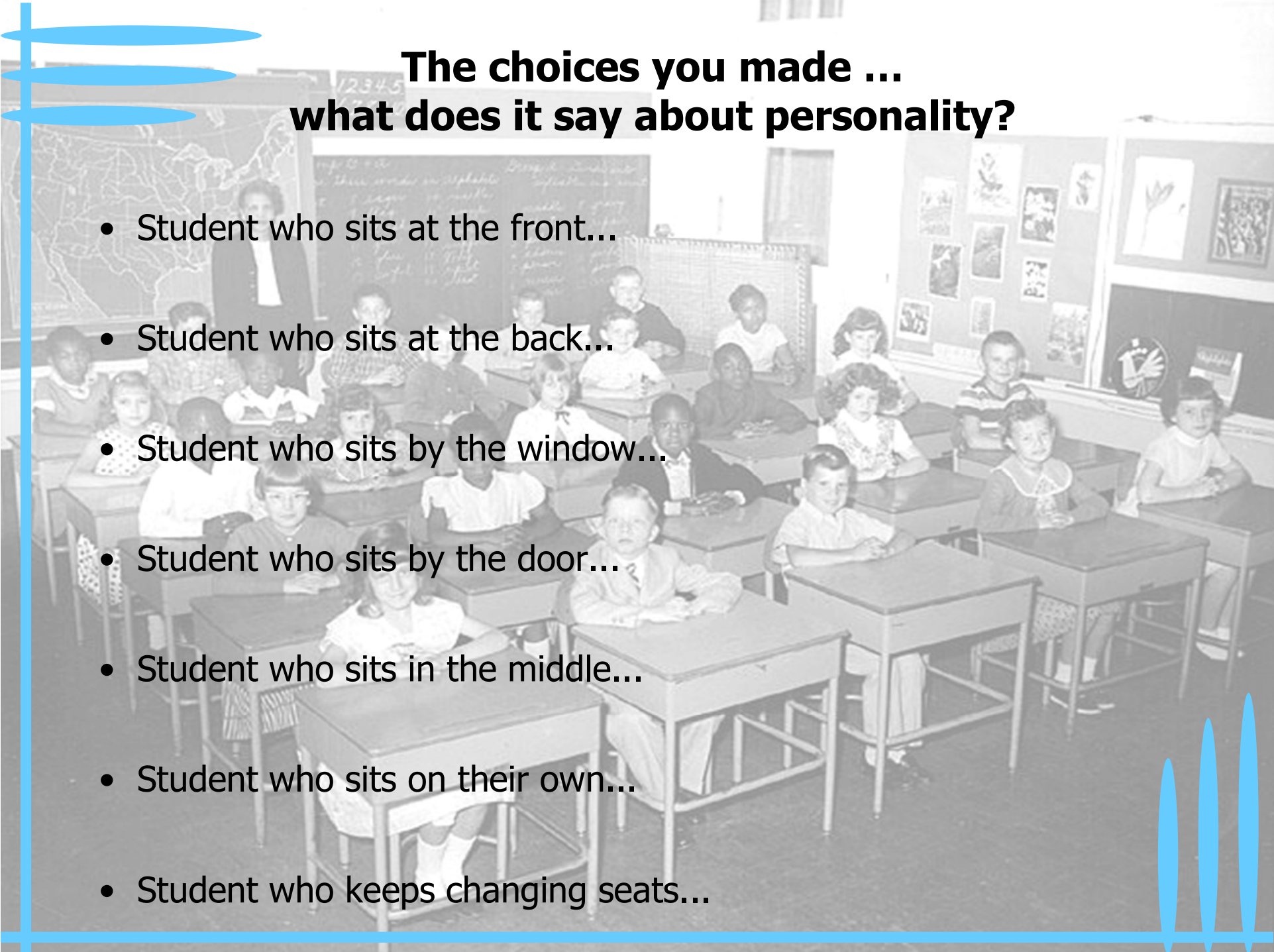


## Personality and the seating plan



*Does personality style  
reveal itself in  
such a simple behaviour as  
where you've chosen to sit  
tonight?*

- **Take a moment to think about your choice of seat**
- **What might it tell others about your personality?**
- **What about others in the room...**
- **From their seat choice, what is their personality?!!**



## The choices you made ... what does it say about personality?

- Student who sits at the front...
- Student who sits at the back...
- Student who sits by the window...
- Student who sits by the door...
- Student who sits in the middle...
- Student who sits on their own...
- Student who keeps changing seats...

## Y12 - Psychology

Cognitive

Social

Biological

Learning



Models of  
memory

Forgetting

Reconstructive  
memory

Dementia



# Y12 - Psychology

Cognitive

Social

Biological

Learning



Obedience

Milgram's experiments

Prejudice

Robbers Cave

Rioting and Hooliganism



# Y12 - Psychology

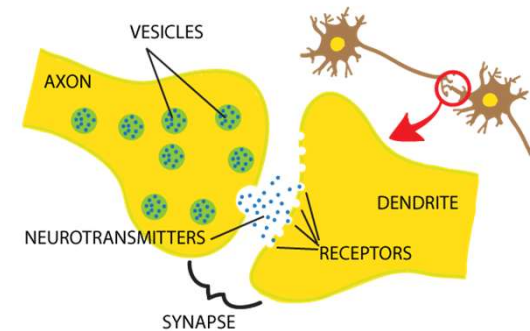
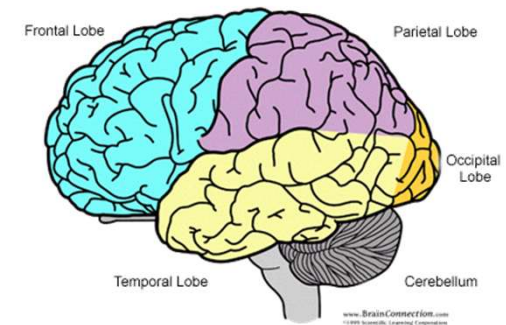
Cognitive

Social

Biological

Learning

Brain structure  
Neurotransmitters  
Aggression  
Evolutionary Theory  
Psychodynamic - FREUD



# Y12 - Psychology

Cognitive

Social

Biological

Learning

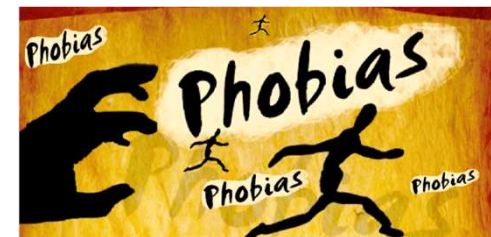
Statistics

Social Learning Theory

Bandura's Bobo Doll

Phobias

Systematic Desensitization



## Y13 - Psychology

Clinical

Criminology

Issues and  
Debates

Synoptic

Inferential  
statistics



Schizophrenia

Anorexia Nervosa

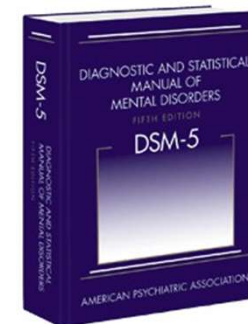
Treatments

Diagnosis

Practice of  
Clinical  
Psychologists



CLINICAL  
PSYCHOLOGIST



DSM-5  
2013

# Y13 - Psychology

Clinical

Criminology

Issues and Debates

Synoptic

Inferential statistics



Anti Social  
behaviour

Are criminals  
born or made?

Jury

EWT and  
reconstructive  
memory



# Y13 - Psychology

Clinical

Criminology

Issues and  
Debates

Synoptic

Inferential  
statistics



Nature vs Nurture

Is Psychology a  
Science?

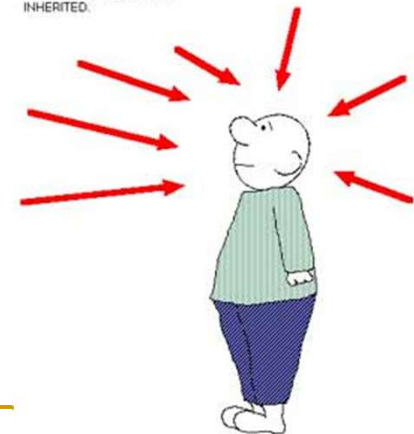
Reductionism

Usefulness to  
society



## EMPIRICISM

ALL KNOWLEDGE OBTAINED  
THROUGH SENSES - NOT  
INHERITED.



## Y13 - Psychology

Clinical

Criminology

Issues and  
Debates

Synoptic

Inferential  
statistics



Mann Whitney U

Spearman's Rank

Chi Square

Wilcoxon Rank  
Test

Standard  
Deviation



---

# Top 25% in the country for value-added

Psychology graduates are highly employable due to their ability to manage data, analyse and evaluate.

**KEY SKILLS IN BUSINESS**

- 59% of students achieving A\*-B
  - 100% pass rate
  - 7 students from 2025 reading Psychology related courses at University.
  - Psychology is a science that has enabled several students to pursue medicine and other competitive courses at University
-

---

# Assessment Methods

- **Three A level papers**

- These will be 135 minute papers consisting of short answer questions and more extended 8,12, 16 and 20 mark essays.
- Paper 1 – Year 1 material (max 12 mark essay)
- Paper 2 – Year 2 material (max 20 mark essay)
- Paper 3 – Year 1 and 2 material (max 20 mark essay)

---

You will sit mock exams at the end of Y12

---

# Skills needed...have you got what it takes?

- **Communication** – written and verbal
- Ability to **discuss** and **evaluate** theories and studies
- **Mathematical skills** (including statistics)
- **Reading** and **extracting** relevant facts
- **Debating**
- Ability to work on **own** and in **groups**
- **Organisational skills**



---

# Are Serial Killers born or made?



- What do we mean by nature?
- What do we mean by nurture?

